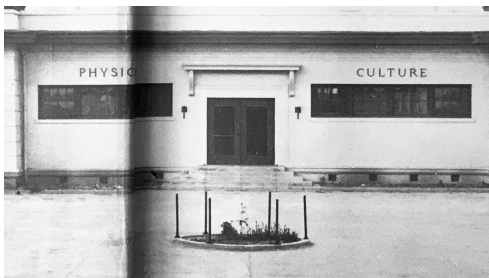


Fullerton High School
Coast Live Oak
(Quercus Agrifolia)



Many generations of students have rested in the cool shadow of the Fullerton High School oak. Planted by the senior class of 1914 as a seedling just over a foot tall. Today its sprawling branches reach 70 feet wide.



1914



1928

The Coast Live Oak (aka California Live Oak) is a long-lived native evergreen tree which grows wild from northern Baja California along the coast to Mendocino county. This is a “keystone” species which supports a rich diversity of native wildlife (including native bees, butterflies, birds, etc..). It is the predominant species in our local oak woodlands.